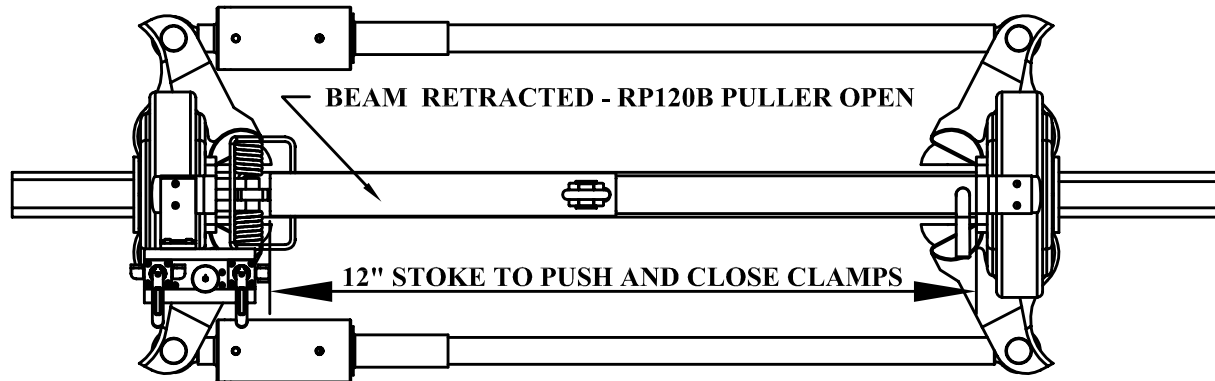


SIMPLEX RP120B

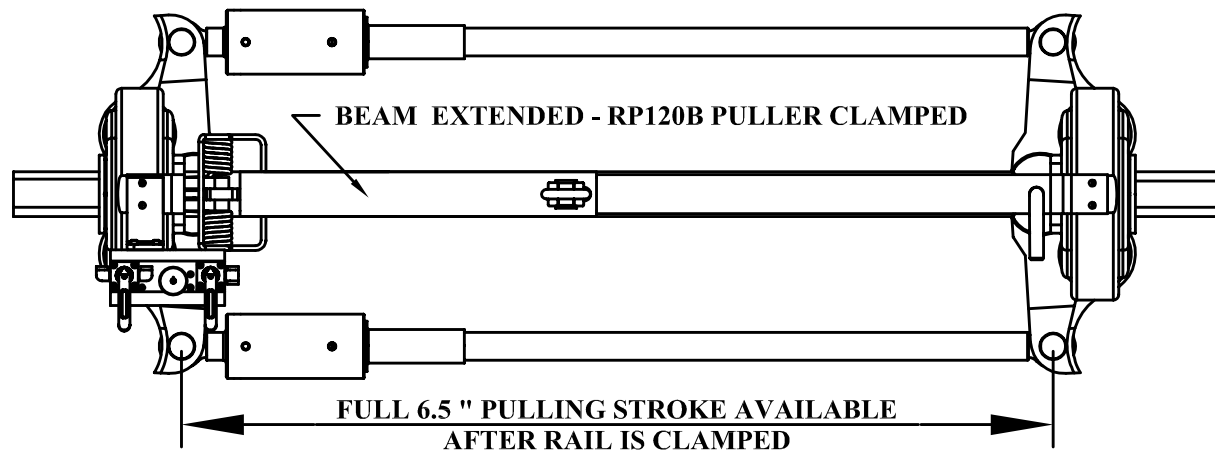
PRODUCT INFORMATION

The Simplex Rail Puller (RP120B) incorporates a balanced hydraulic lifing (bail) beam assembly that utilizes a 12" stroke. The beam doubles as a balanced lifting device, but more importantly, **the dynamic 12" stroke of the beam** is used to open and close the clamping brackets, for clamping and unclamping the rail web.



By extending the beam, both the clamping brackets are pushed apart. The hydraulic pull cylinder rods remain static, in the fully extended position. This operation closes the swing clamps on the rail web.

Utilizing the hydraulic lifting beam (rather than the pull cylinders) to close the swing clamps eliminates the need for an additional 4" or 5" of stroke on the pull cylinders that would be required to close the clamps. This also allows for a lighter and more compact puller.



IMPORTANT. Because the hydraulic beam is centered on the puller, this method of closing the clamp assures the proper positioning and alignment of the puller after the rail is tensioned. This also eliminates the need to use pinch bars to align the brackets or help close the swing clamps.